

FUTURE MADE
BY HAND

WANTED

BY

HAND



Pennsylvania
College of Technology

A Penn State Affiliate



1,000,000+ IDEAS

INTRODUCTION — ◇ ○

IF

you made the future by hand, would
it be different from today? Would it be
more thoughtful, imaginative, and intuitive?
Would it work better for more people
throughout the world?

If you put more into today, could you
get more out of tomorrow? If you create
your future at Pennsylvania College of
Technology, the answer is yes.

1,000+ PATHS

1

FUTURE



TABLE OF CONTENTS

WHY PENN COLLEGE?	2
ACADEMIC PHILOSOPHY	4
ACADEMIC PROGRAMS	6
FEATURED MAJORS	8
BIRD'S EYE VIEW	18
ON-CAMPUS LIVING	21
STUDENT LIFE	22
ATHLETICS	28
CAMPUSES	30
INDUSTRY PARTNERS	32
MAKER SPOTLIGHT	34
GLOBAL STUDIES	36
ADMISSIONS & AID	37

The Future Needs You

Here, you actually live what you'll become. Right now, today, this moment. That's the approach that has made Penn College unique for more than 100 years. Our tomorrow-minded students know what it takes to build fulfilling, successful lives for themselves—that's why they're here. Not only for the hands-on job experience, but also for the full-on college experience. For getting right down to it, working with companies, learning from experts, and taking the future into their hands.



Your Path

- 150+ LEARNING LABS
- 11:1 STUDENT-TO-FACULTY RATIO
- 60+ STUDENT ORGANIZATIONS
- LEADERSHIP DEVELOPMENT PROGRAMS
- INDUSTRY & CORPORATE PARTNERSHIPS
- COMPREHENSIVE ACADEMIC SUCCESS RESOURCES
- 3:1 LAB-TO-LECTURE HOURS
- CREDIT FOR RELEVANT LIFE EXPERIENCES
- SEAMLESS ASSOCIATE-TO-BACHELOR-DEGREE PATHWAYS
- NCAA DIVISION III ATHLETICS
- CUTTING-EDGE FACILITIES & EQUIPMENT
- 16-STUDENT AVERAGE CLASS SIZE
- WIDESPREAD INTERNSHIPS, CO-OPS & CLINICALS
- GLOBAL EXPERIENCE OPPORTUNITIES

96% GRADUATE PLACEMENT RATE



EXPERIENCE ACQUIRED

At Penn College, you're not just building and sharpening your skills. You're learning alongside faculty already proven in their careers, working with the latest technology, and pushing your boundaries. You're doing the in-demand work that tomorrow needs, the kind that drives the economy, in next generation facilities on top-of-the-line equipment. Across every degree and credential, you're becoming qualified not just to thrive in your industry, but to lead it.

TOMORROW IS IN THE MAKING

Begin at the Beginning

In your very first semester, you'll use the same equipment as leaders in your field. Whipping up gourmet cuisine in state-of-the-art commercial kitchens. Perfecting welding skills in the expansive 55,000+-square-foot facility. Growing plants sustainably in our hydroculture garden. You'll be actively immersed in your career and see the impact your work will have on the industries of tomorrow.



TOMORROW IS IN THE MAKING

HERE

you'll use each day as practice for the next.

Working out problems, seeing the results, and tackling them again—until you can solve them in your sleep. Gaining the knowledge and support that make things start happening for you. Like job offers long before graduation, for example. You won't just grow your career. You'll begin it on day one.

PRACTICE MAKES PROFESSIONAL

Go ahead. Pick your profession. Then define it.

At Penn College, students are learning to work, solve, and lead in a wide range of fields.

SCHOOL OF BUSINESS, ARTS & SCIENCES

ARTS & SCIENCES

Brewing & Fermentation Science
 Emergency Management & Homeland Security
 Graphic Design & Art
 Human Services & Restorative Justice
 Individualized Programs of Study

BUSINESS & HOSPITALITY

Accounting & Business Administration
 Baking & Culinary



SCHOOL OF ENGINEERING TECHNOLOGIES

CONSTRUCTION & ARCHITECTURE

Architecture & Sustainable Design
 Building Construction
 Construction Management
 Heating, Ventilation & Air Conditioning

DIESEL TECHNOLOGY & NATURAL RESOURCES

Diesel Truck, Heavy Equipment & Power Generation
 Forestry
 Heavy Equipment Operations
 Landscape/Plant Production

INDUSTRIAL & COMPUTER TECHNOLOGIES

Electrical
 Electronics & Computer Engineering Technology
 Engineering & Industrial Design Technology
 Information Technology

MATERIALS SCIENCE & ENGINEERING TECHNOLOGIES

Apprenticeship Technology
 Automated Manufacturing & Machining
 Civil Engineering
 Non-Destructive Testing
 Polymer Engineering
 Welding & Metal Fabrication

TRANSPORTATION

Automotive
 Aviation
 Collision Repair & Restoration



SCHOOL OF NURSING & HEALTH SCIENCES

HEALTH SCIENCES

Allied Health
 Biomedical & Prehospital
 Dental Hygiene
 Physical Therapist Assistant
 Radiography
 Surgical Technology

NURSING

Nursing, LPN to RN, A.A.S.
 Nursing, A.A.S.
 Nursing, Part-time, Evening & Weekend, A.A.S.
 Nursing, B.S.N.

MASTER'S DEGREES

Nursing Education, M.S.N.
 Physician Assistant, M.S.

POST-MASTER'S CERTIFICATE

Nursing Education



BACHELOR'S COMPLETION DEGREES

Applied Management
 Applied Technology Studies
 Automotive Technology Management
 Building Automation Engineering Technology
 Dental Hygiene
 Healthcare Leadership & Administration
 Nursing, RN to B.S.N.
 Residential Construction Technology & Management

Completion degrees offer accelerated opportunities for students to complete a bachelor's degree. Many can be completed online.

THOSE WHO CAN, TEACH

Not only are our faculty excellent teachers, but they are also passionate about working in their fields. They have strong local presence as business owners and industry experts. And, as mentors, they'll use their extensive experience to help you decide which path is right for you. With small class sizes, these professors and instructors get to know you. They are deeply committed to seeing you succeed, at school and after graduation. That's why Penn College classes are never taught by graduate students or teaching assistants, and why our curriculum is constantly updated and fine-tuned to meet workforce needs.

BECAUSE YOU CARE.

BECAUSE
YOU CARE.



If you dream of making a difference in healthcare,

you've come to the right place. Whether you're looking to work directly with patients as a physical therapist assistant or dental hygienist or prefer making an impact in research or laboratory science, we have you covered. Whatever pathway you choose, you'll master the specialized skills and confidence to thrive in one of the most purpose-driven fields.

Health Science Pathways

Pick your path and pursue a career in one of the most rewarding fields.

Biomedical Sciences (B.S.)

Explore the engaging intersection of biology and medicine in preparation for careers in biomedical sciences and laboratory science. This is an excellent choice if you're thinking about our Physician Assistant master's program.

Prehospital Medicine (B.S.)

Gain a strong foundation in prehospital medicine with hands-on training for emergency careers.

Dental Hygiene (A.A.S.)

Train in our on-campus dental hygiene clinic where you'll treat real patients. You'll also have the option to pursue your bachelor's online.

Physical Therapist Assistant (A.A.S.)

Learn what it takes to promote an active recovery process and help patients lead pain-free lifestyles.

Physician Assistant (M.S.)

Dive into a two-year program where you'll gain the expertise to evaluate, diagnose, and treat medical conditions.

Radiography (A.A.S.)

Master the latest technology to assist the healthcare team make informed medical decisions.

Surgical Technology (A.A.S.)

Become an integral part of an O.R. team, providing care to patients before, during, and after surgery.

Nursing

From the E.R. to the clinic, the operating room to the recovery

room, nurses make a lasting impression. At Penn College, you'll find a lineup of rigorous hands-on programs, dedicated support in small classes, and technology-centric labs outfitted with a family of high-fidelity mannequins that emulate the real thing. Here, you'll learn from expert faculty with real-world experience who are determined to motivate, inspire, and prepare you for one of the most challenging and rewarding career fields.

- ◆ Study abroad and expand your horizons and your skills with programs like the weeklong trip to Guatemala where nursing students work in a volunteer-led medical clinic
- ◆ Join a growing network of 3,800+ nursing graduates pursuing their passion with world-class medical providers
- ◆ Train for success in a program with close to 100% job placement while learning alongside peers who score far above the national and state first-time pass rates on the National Council Licensure Exam (NCLEX)



I'M KAYLA.

MY DEGREES: SURGICAL TECHNOLOGY, HEALTHCARE LEADERSHIP & ADMINISTRATION

My Passion: Serving Patients

Her desire to be in the operating room was ignited in high school when she job shadowed a surgeon. After researching career possibilities, Kayla landed on surgical technology. Today she's working as a lead surgical technologist at Penn State Health Milton S. Hershey Medical Center specializing in non-invasive robotic surgery. In addition to her full-time job, Kayla is pursuing her bachelor's in Applied Health Studies (renamed to Healthcare Leadership & Administration for Fall 2024 starts)—a 100% online degree that's guaranteed to open additional opportunities in the field she adores.

I'M STEPHANIE.

MY DEGREE: NURSING

My Passion: Saving Lives

Stephanie is no stranger to adversity. A car accident severely challenged her ability to continue her coursework. But she remained determined, leaned on supportive faculty, and put in the extra time to earn her nursing degree. Stephanie thrives in chaos. When the going gets tough, she excels. Today, she's a flight registered nurse for Geisinger Life Flight. Challenges are an everyday reality. And she's overcoming them with ease and confidence. Knowing the value of standing strong against all odds, Stephanie created the FLIGHT (Fearless Learning in Good & Hard Times) Commencement Award and the SOAR (Students Overcoming and Rising) Fund. Both efforts give students the extra boost they need to rise above and seize a brighter tomorrow.

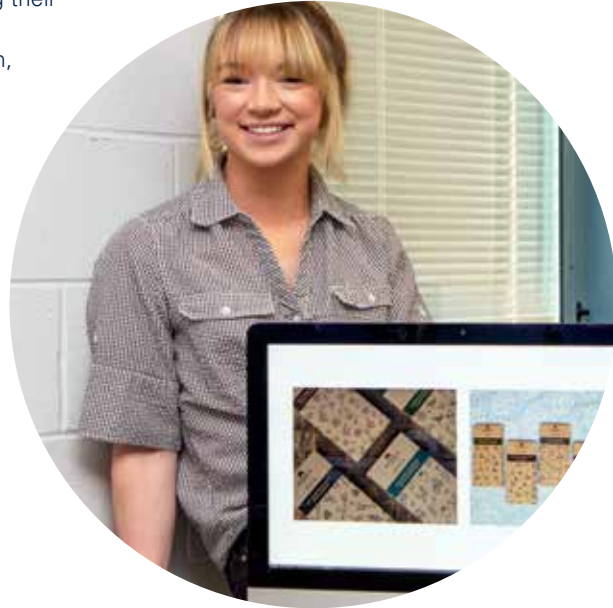


BECAUSE YOU DESIGN.

Ever stop and wonder, "Who thought

of this?" Trace the origin and you're guaranteed to find a creative problem solver unafraid to ask, "What if?"

Innovation and imagination run free at Penn College. From inspired wedding cakes to cutting-edge apps, our makers are pouring their hearts and minds into the process. Because perfecting their crafts is the ultimate endgame. Whatever you're called to design, build, bake, or program, we say, "Bring it on."



Graphic Design

In this career-focused program, you'll fine-tune your craft

alongside a like-minded community of creatives. Faculty and students embrace a can-do culture that welcomes challenges, pushes boundaries, and curates a collection of standout portfolios. With a bar that high, it's no surprise that so many students earn national awards for their eye-catching work.

I'M HALEY.

MY DEGREE: ARCHITECTURE

My Passion: Designing Earth-Friendly Buildings

It's easy to see how Haley fell in love with architecture. She was drawn to math and art in grade school and was inspired by her artistic grandfather. In fact, he designed her childhood home. As her senior project, Haley illustrated how to retrofit her beloved home to become a passive building—a practice she learned through her internship experience at the Passive House Institute US. Haley now works full-time at this non-profit committed to decarbonizing the built environment by making high-performance passive practices the mainstream market standard.



Game & Simulation Programming

How will you make your mark on tomorrow?

With a degree in Game & Simulation Programming from Penn College, the opportunities are endless. In this specialized pathway, you'll master skills that unlock potential across all fields—from video game creation to simulation software design. And when you're ready to cut loose from coursework, put your talents to the test with the Wildcat esports team.



I'M CORY.

MY DEGREE: INDUSTRIAL DESIGN

My Passion: Crafting Fun Things

All he wanted in life was to find joy in the task at hand. That's the mindset that led Cory to study Industrial Design at Penn College. Assignments never felt like work. That's because he was fully engaged and using his imagination to inspire inventive solutions. After graduation, this focus on fun led him to Orlando where he's working today as the lead fabrication designer for the custom sign creator responsible for interactive displays for Universal and Disney.

I'M ALISHA.

MY DEGREE: BAKING & PASTRY ARTS

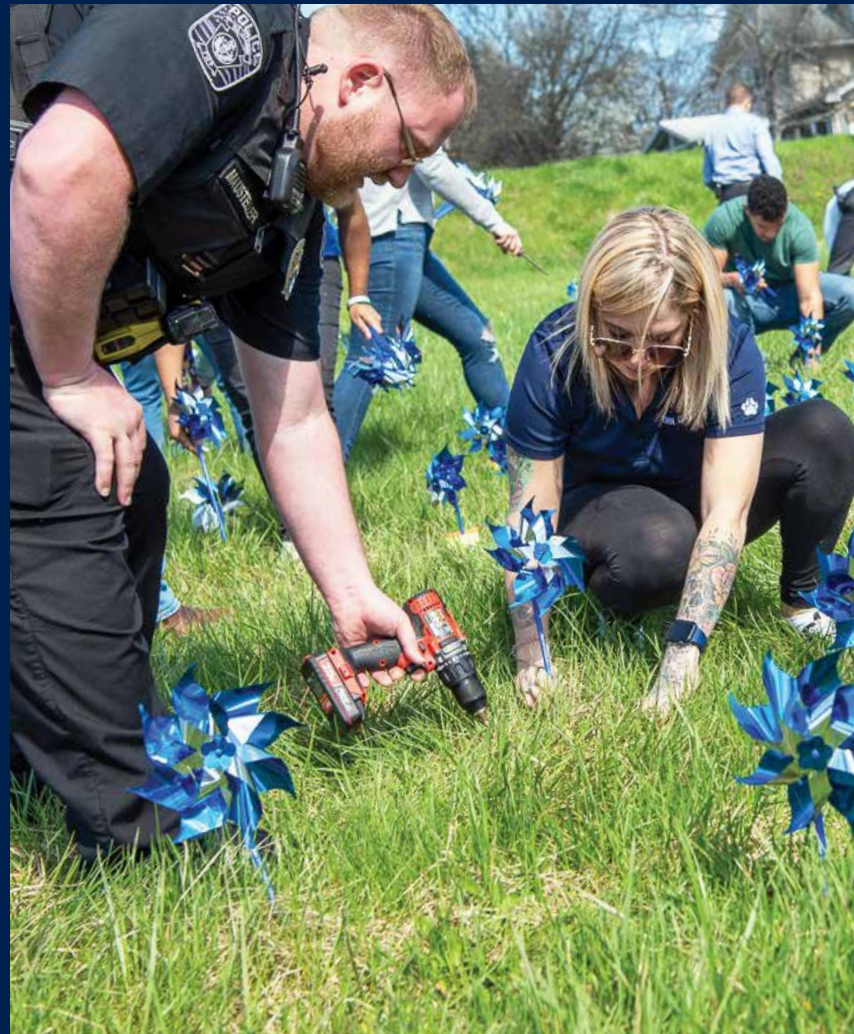
My Passion: Inventing Amazing Cakes

After graduating from Penn College, Alisha began working as a cake decorator at the popular Lynn Sandy's Bakery in Scranton, PA. Her creativity and dedication to the business earned her the title of executive pastry chef. From single-serve cupcakes to picture-perfect wedding cakes, she's created it all. Her resume includes cakes for NASCAR, WWE, and other well-known clients along with reader's choice awards from regional publications. The icing on the cake? Now, she's the boss. Alisha purchased Lynn Sandy's Bakery in 2022.



BECAUSE YOU SERVE.

One of the most powerful ways to shape a better tomorrow is by choosing a career that allows you to serve and strengthen your community. If your goal is to give back, here's your chance to turn that passion into your life's work. Whether you're drawn to Human Services & Restorative Justice or Emergency Management & Homeland Security, you'll feel good knowing you're sparking impactful change when and where it's needed most.



Human Services & Restorative Justice

You want to spark positive change, lift up others, and build stronger communities for generations to come. The Human Services & Restorative Justice program will arm you with life-changing skills to become a difference maker. You'll be immersed in your field from the first semester, learning tools and techniques, and getting to the heart of how to empathize and empower. This program will inspire you to embrace your can-do spirit. To join forces with like-minded advocates. And to put the wheels of change in motion.

- ◇ Explore a holistic approach that examines the individual, community, and society
- ◇ Practice your skills in a new lab space dedicated to collaboration and hands-on activities
- ◇ Get real-world experience with in-depth community-based practical learning internships
- ◇ Pursue an associate's in two years or seamlessly continue for your bachelor's in four

D T REAL REAL

REAL-WORLD
RELEVANT

REAL-WORLD
RELEVANT

REAL-WORLD
RELEVANT

REAL-WORLD
RELEVANT

Emergency Management & Homeland Security

Emergency management and homeland security professionals have one goal. To keep us safe. When a disaster strikes, they're at the ready and in control. Whether responding to a global pandemic or preventing an act of terrorism, they always bring their A-game. That's why this program calls for 275 hours of field experience and countless more trainings in the lab. Here, you'll be challenged to react with confidence, work all angles, and think through every detail. Because large-scale threats call for high-level preparation. And when the unimaginable occurs, you'll be undeniably ready.

- ◇ Learn to develop plans that connect federal, state, and regional emergency management agencies and the communities they serve
- ◇ Put your training to the test in our on-campus Emergency Operations Center where you'll fine tune communication and collaboration strategies
- ◇ Take courses that matter to you. Customize your experience with built-in electives ranging from surveying to forestry and fire prevention



KEYS TO SUCCESS

Critical thinkers are in demand across all organizations.

Bring technical know-how and expert problem-solving skills and you're guaranteed to thrive wherever you land. Tomorrow makers with trouble-shooting abilities excel in fields like automation. Pursue this path with us and you'll find a diverse lineup of industry-driven programs to position you for success.

BUILDING AUTOMATION PATHWAYS

When it comes to blazing your career path, flexibility is paramount. Michael came to Penn College for an associate's in Electric Power Generation Technology. After jumping into his lab work, he discovered an interest in controls and communications. This newfound curiosity prompted him to add a bachelor's in Building Automation Engineering Technology to his resume. At Penn College, we call this a dual degree. And it's a common pathway to building automation. You can choose your associate's from the programs below and level up in the bachelor's for even more career prospects.

- ◆ Electric Power Generation Technology: Diesel Emphasis
- ◆ Electrical Technology
- ◆ Electrical Construction
- ◆ Mechatronics Technology
- ◆ Heating, Ventilation & Air Conditioning Technology
- ◆ Electronics & Computer Engineering Technology: Robotics & Automation Emphasis
- ◆ Information Technology: Network & User Support



Automation Engineering Technology

Walk into any manufacturing facility and you'll see

countless examples of automation in action. From conveyor systems to robots, efficiency is everywhere. This pathway allows you to choose your area of specialization (Mechatronics or Robotics & Automation), but also captures the full scope of electrical, mechanical, and robotic processes in the automated manufacturing environment. So when graduation rolls around, you'll be ready to hit the ground running—engineering, designing, and problem solving in the manufacturing facility of your choice.



Automated Manufacturing & Machining

In the world of manufacturing, efficiency is everything.

If you can bring an eye for innovation and the standout skills to step-up production, you'll instantly set yourself apart. Pursue an automated manufacturing and machining degree from Penn College and you'll hone the precise skills you need to make an impact on day one. We regularly consult with industry leaders to ensure our programs keep pace with rapid changes in the field. So you're sure to get the training you need to rise to the top of your trade.



INTERNSHIP EXPERIENCE

MICHAEL SORMILIC BUILDING AUTOMATION ENGINEERING TECHNOLOGY

In the summer of his junior year, Michael accepted an internship as a controls technician where he was able to flex his skills alongside industry experts.

" FROM THE CLASSROOM TO THE LABS, THE TECHNOLOGY, EQUIPMENT, AND THE PERSONAL RELATIONSHIPS WITH PROFESSORS COULD NOT HAVE BETTER PREPARED ME FOR MY INTERNSHIP. I CAN SAY I FEEL CONFIDENT WORKING ALONGSIDE MY COWORKERS, ASKING QUESTIONS, UNDERSTANDING THE WORK BEING DONE AS WELL AS BEING ABLE TO CONTRIBUTE TO THE EFFORTS. ONCE I GRADUATE, I WILL BE ABLE TO SEAMLESSLY STEP INTO THIS CAREER. "



CHECK OUT HIS BLOG POST
pct.edu/michael-blog



KINEXUS

From products and services to solutions

and processes, careers in engineering reach far and wide. At Penn College, you'll join a community of creators pursuing their passions in all types of industries from polymers to metal fabrication. Their interests might be diverse, but their focus remains the same. They're driven by a desire to innovate and destined to transform their futures and the industries they'll go on to lead.

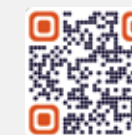


I'M DYLAN.

MY DEGREE: ENGINEERING DESIGN TECHNOLOGY

My Passion: Building Fast Cars

Dylan grew up watching NASCAR with his dad. And has been a massive race fan ever since. When it came time for college, Dylan found a career path that would put him close to the action—designing parts for the race industry. Just after graduating from Penn College, he started his dream job with The Garage Shop in North Carolina. Shortly after beginning his new gig, Dylan was called on to design front and rear suspension brackets for a Ford Roaster that topped a whopping 200 mph in a sanctioned race.



MEET DYLAN

pct.edu/dylan

BECAUSE YOU CREATE.

Civil Engineering Technology

Imagine the sense of satisfaction that comes along

with engineering a rock-solid bridge on a major highway or the community park where families spend their Saturday afternoons. At Penn College, you'll learn how to create everyday spaces with an eye on form, function, and the future. And because practice makes perfect, you'll explore concepts in the classroom and apply them in the real world through community projects and career-advancing internships. And with a 100% graduate-placement rate, you can rest easy knowing employers want you on their team.

Polymer Engineering Technology

The future demands sustainable solutions.

At Penn College, we're training the next generation of engineers and designers to lead the charge. Polymer engineering students are immersed in hands-on labs. They're mastering industry-wide processes using cutting-edge equipment to imagine smarter, stronger, and safer solutions. From creating high-performance airplane parts to lifesaving healthcare devices, the potential is there. And so are our polymer engineering graduates—excited and prepared to seize the possibilities.



Electronics & Computer Engineering Technology

Just down the road from Penn College is QorTek, Inc.—

a world leader in the creation of electronics components for the United States Department of Defense. Their location, culture of curiosity, innovative approach, and electronics focus have been an ideal match for Electronics & Computer Engineering Technology graduates. Check out the lineup of talent at QorTek and you'll find a host of graduates including several senior-level positions in engineering and printed circuit board design.

INDUSTRY SPOTLIGHT: QORTEK, INC.



CHECK OUT THE VIDEO AT

pct.edu/qortek-video

I'M JEFF.

MY MAJOR: MANUFACTURING ENGINEERING TECHNOLOGY

My Passion: Making Cool Things

He's not just called to chase inventive ideas. Creating is part of Jeff's identity. That's why he was drawn to Penn College. Spending three hours in the lab for every one hour in lecture gives Jeff a fully immersive experience packed with endless opportunities to master his craft. And when he's not testing theories in the lab, Jeff is flexing his skills with his own business venture—designing manufacturing and product development solutions for motorsports, engineering, and tech industries.



MEET JEFF

pct.edu/jeff





A BIRD'S EYE VIEW

There's so much to do on campus, it's hard to narrow it down. Here are a few of our favorites.

1. FISH REAL ESTATE LEADERSHIP CHALLENGE COURSE: Flex your balance and your teamwork skills on a ropes course, tightrope, tire traverse, and more.

2. SUSQUEHANNA RIVER: Fish nearby rivers and streams or drop in your kayak for a weeknight paddle down the Susquehanna.

3. WILLIAMSPORT WATER AUTHORITY: Unwind on some of the area's most beautiful trails, located just a few minutes from campus.

4. OUTDOOR STUDY NOOKS: Soak up the sun and this week's lessons—just steps away from all the library's resources.

5. CENTER FOR CAREER DESIGN: Stop by for everything from mock interviews to a closet packed with free professional attire.

6. MADIGAN LIBRARY: Meet friends for a coffee at Bookmarks Café or collaborate with classmates in a private study room.

7. DISC GOLF: Challenge your classmates to a game of disc golf. The nine-hole layout starts at the Army ROTC house and ends at the Field House.

8. DAVIE JANE GILMOUR CENTER: Visit the Center for Academic Excellence. Financial Aid and Admissions offices are also in this building.

9. THE COLLEGE STORE: Stock up on all your supplies from books and spirit wear to essential tools and equipment.

10. THE FITNESS CENTER: Take a break from class and hit the gym where you'll find everything from treadmills and cardio machines to free weights and a sauna.

11. BUSH CAMPUS CENTER: Stop in for a full schedule of activities like campus bingo, wing night, bible study, and club meetings.

12. THE ROCK: Check out the latest student artwork on our 26-ton always-changing painted rock.

13. DENTAL HYGIENE CLINIC: Take advantage of \$5 student teeth cleanings at our on-campus clinic.

14. FIELD HOUSE: Round up your friends and stop in for Thursday night card tournaments, arrow tag, glow roller skating, and more.

15. UPMC FIELD: Take in a lacrosse or soccer game and cheer on your fellow Wildcats.

16. ROSE STREET COMMONS: Play catch with some friends. Hang your hammock in a tree. Or relax on a blanket with your favorite book.

17. COLLISION REPAIR LAB: Have a fender bender? No problem. Just pay a \$10 shop fee plus the cost of parts and collision repair, students will take care of the rest.

18. DR. WELCH WORKSHOP: Collaborate with like-minded creators at the Makerspace where you'll find everything from sewing machines to lathes.

19. CHILDREN'S LEARNING CENTER: Set your little one up for success with on-campus childcare.

20. ARMY ROTC HOUSE: One of the many perks of being an ROTC cadet is access to the ROTC house, located just up the road from the Gilmour Center.

21. DOWNTOWN WILLIAMSPORT: Whether you want to hop on the bus or go by foot, downtown shops and restaurants are just a mile away.

SPOTLIGHT ON DAUPHIN HALL

ON-CAMPUS LIVING

Living in the heart of campus is one of the best ways to take in the full college experience. New first-year students live in Rose Street Commons. Complete with a dining hall, convenience store, and fitness center, this six-hall facility has everything you need and lots more. You'll even have a spot to safely store your bike.



Dauphin Hall is one of the six residence halls located in Rose Street Commons, which includes both apartment-style and traditional dorm layouts.



With lots of green space, the outside of the Commons is just as welcoming as the inside.



Thanks to suite-style layouts there's plenty of options for hanging out with your roomies.



Located inside Dauphin, Fuel offers drinks, snacks, and grab-and-go sandwiches.

STUDENT LIFE

The best part of living with a group of students

pursuing different paths is how they band together to make Penn College their own. With so many ways to get involved in college life, you'll always be a part of something here. Because the college experience is about so much more than classrooms, lectures, and textbooks. It's about exploring, joining, leading, and recharging, too.



STUDENT PERKS

Study in Williamsport—home of the Little League Baseball® World Series

Biannual Career Fair hosting 380 employers from a pool of 2,000+ industry partners

Dedicated support from counseling services

The Dr. Welch Workshop: A Makerspace at Penn College

Major General Fred F. Marty, Veterans and Military Resource Center

Access to childcare through the Robert & Maureen Dunham Children's Learning Center

Le Jeune Chef Restaurant discount and etiquette dinners

Leadership development

Student-staffed help desk for IT support

Resume and business card service

Career Gear Clothes Closet

Affordable car repair service opportunities at the Automotive Labs

Proximity to PA Wilds and Poconos

Tickets to Community Arts Center shows

Free Williamsport area bus service

Access to Susquehanna River Walk and Ridge Trail

CENTER FOR ACADEMIC EXCELLENCE

Ups and downs are a natural part of the college journey. Whether you're struggling with grades or personal challenges, you'll find the support staff and resources to keep you moving in the direction of your goals.



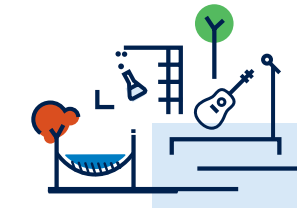
EXPLORE pct.edu/academicexcellence



As a student, you can get insight from the field by partnering with an alumnus through our mentoring program. You can also tap into alumni networks here in Williamsport and in the nearby metropolitan areas of Philadelphia, New York City, Pittsburgh, and Washington D.C., to take advantage of internships and job opportunities.



EXPLORE pct.edu/careerdesign



INVOLVEMENT

Our students are always ready to try something new or get better at what they do. Our 60+ clubs and organizations help them do just that. Develop leadership skills as a mentor or tutor, make change in student government, compete in intramurals, or attend weekly events. There are lots of opportunities to flex your skills and network via professional organizations, societies, and associations.

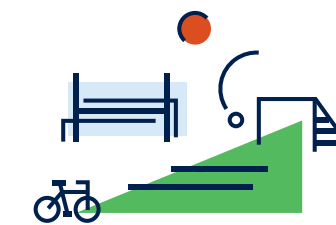


COMMUNITY

Whether you choose to live in one of our apartment-style residence halls, commute, or reside just off campus on Millionaire's Row, you'll enjoy being part of a strong campus culture with access to all clubs and campus services. No matter where you choose to reside, you'll experience the benefits of campus life.



Want to bring your car? No problem. Parking spaces are for first-year students, too.



ENGAGEMENT

When you want a break from your studies, all you have to do is step outside your door. Challenge your friends to a game of pool, cheer on the Wildcats at a game, try out our student-run restaurant, Le Jeune Chef, or head to the BBQ grills after class for a low-key get-together. Relax with a session of goat yoga. Get creative with arts and crafts. Or take the stage during an open mic night. Events and activities are everywhere you look.





Penn College is nestled within historic Williamsport, near the Victorian mansions of Millionaire's Row built by the lumber barons of the 1800s. We're next door to some of Pennsylvania's most beautiful State Parks, forests, and Class A Wild Trout Streams. Just a short walk from the natural beauty of the Susquehanna River, main campus sits at the base of Bald Eagle Mountain. Hit the hiking trails, campgrounds, and mountain biking routes for scenic views and outdoor activities. Downtown Williamsport is lively with art galleries, restaurants, breweries, and cafes, not to mention one of the East Coast's finest performance venues, the Community Arts Center.



EXPLORATION



STUDENT TRADITIONS

- Wildcat Weekend
- Homecoming Bonfire
- Pre-finals Midnight Breakfast
- Battle of the Lumber Soccer Games
- Wildcat Madness Basketball Kickoff
- Little League Baseball® World Series
- MLK Day of Service



WILLIAMSPORT WATER AUTHORITY

Just minutes from campus are miles of trails with endless opportunities to cut loose for a run or take it slow and soak in the sights and sounds of nature.

SUSQUEHANNA RIVER WALK

Located less than a mile from campus, this scenic paved pathway borders the river and is about a three-mile loop from campus.

COMMUNITY ARTS CENTER

The 2,000-plus-seat Community Arts Center located in downtown Williamsport offers everything from Broadway-style productions and comedy acts to live musical performances.



EXPLORE
pct.edu/noboundaries



60+ STUDENT ORGANIZATIONS

- Student Government Association
- Black Student Union
- Greek Senate
- One World Club
- Penn College Alliance
- Penn College Benefitting THON
- Pep Band
- American Welding Society
- Baja SAE
- Construction Management Association
- SkillsUSA
- Society of Plastics Engineers
- Student American Dental Hygienists' Association
- Student Nurses' Association
- Student Wildcats of Robotic Design
- Wildcat Online Gaming Association



EXPLORE
pct.edu/studentorgs

13 TOP-10 FINISHES

5 MILES OF TEST TRACK

4-WHEEL DRIVE CAR

47 MPH MAX SPEED

15+ TEAM MEMBERS

100% DEDICATED CLUB SPACE

2 FIRST-PLACE FINISHES

18 YEARS OF COMPETITION

HANDS-ON BY NATURE

At Penn College, you'll meet a community of creators.

Regardless of the passion they're pursuing, they crave their craft. That's why you'll have lots of time to see concepts come to life in lab and take your interests to the next level outside of class. Because we understand that you are hands-on by nature. It's how you learn. How you explore. And how you live. This is the maker mindset. It's part of every program and it's the cornerstone of our culture.

DRIVEN TO SUCCEED

Each year, the Penn College Baja team draws talent from across the College to create a high-performance car. No, this isn't a class assignment. It's a labor of love. Countless hours designing the perfect vehicle. Loads of lab time engineering the highest performing parts. Hundreds of runs around the rugged test track. It's not easy. But it's totally worth it when they nail hairpin turns and see the dirt fly as they blaze past the competition.

THE MISSION

To design and build a high-performance single-seat all-terrain vehicle that will outperform teams from top engineering colleges.

THE TEAM

A talented collection of students from various majors working together to achieve the best possible combination of durability and speed.

THE CHALLENGE

Create a vehicle that tops the competition in acceleration, suspension, maneuverability, and endurance.

THE RESULTS

The 2022 Baja crew made team history with legendary back-to-back first-place finishes in the coveted endurance competition.



EXPLORE
pct.edu/bajasae



STAY WILD STAY WILD STAY WILD STAY WILD STAY WILD

ATHLETICS

STAY WILD STAY WILD STAY WILD STAY WILD STAY WILD STAY WILD



STAY WILD

At Penn College, we are all Wildcats.

We're ferocious, scrappy, resourceful, and ready—on the field and off. As an **NCAA Division III** school, we're all about getting right into the action. We arrive prepared, practiced, and primed to pounce at every opportunity. From the intercollegiate level to club sports and intramurals, we drive forward toward what's next, with hard work, passion, and determination. We know expertise comes from putting our minds and bodies to work, with creating a better future as our goal. That's the Wildcat way.

You've heard of a pod of whales, a herd of sheep, and a pack of dogs. But what about a group of wildcats? Together, we're known as a "destruction." Seriously, look it up! Join us in the Penn College student fan section—The Destruction Zone—to cheer on your fellow Wildcats.



WOMEN'S SPORTS

- Archery
- Basketball
- Cross Country
- Esports
- Soccer
- Softball
- Tennis
- Volleyball

MEN'S SPORTS

- Archery
- Baseball
- Basketball
- Cross Country
- Esports
- Golf
- Lacrosse
- Soccer
- Tennis
- Wrestling



MEET DEAN, a cross-country runner and business management major at Penn College. Check out his video for a snapshot of the student-athlete experience at Penn College.



Find other Wildcat videos and learn how they're pushing the limit in and out of the game.



STAY WILD STAY WILD STAY WILD STAY WILD STAY WILD

STAY WILD STAY WILD STAY WILD STAY WILD

STAY WILD



CAMPUS AND BEYOND

SCHNEEBELI EARTH SCIENCE CENTER

LOCATED JUST 15 MINUTES SOUTH OF MAIN CAMPUS, the Schneebeli Earth Science Center is home to a host of programs from diesel and heavy equipment operations to forestry and landscape/plant production. If you envision yourself enjoying a career in the great outdoors, this is the place to be.

HANDS-ON LABS

- ◆ 400 acres of natural forestland
- ◆ New fully operational sawmill
- ◆ Expansive lab spaces for diesel and heavy equipment
- ◆ 125-acre heavy equipment operations site
- ◆ Manicured five-acre arboretum
- ◆ 6,500+ square feet of greenhouses for landscape and plant production



LUMLEY AVIATION CENTER

JUST OFF THE AIRSTRIP AT THE WILLIAMSPORT REGIONAL AIRPORT, you'll find the 50,000-square-foot Lumley Aviation Center. Packed with 20+ aircraft ranging from gliders and general aviation aircraft to corporate and airline models, this expansive facility offers everything you need to put your future in motion.

Whether you pursue your associate's degree or bachelor's, you'll kick off the day with an hour of theory. Then follow it up with nearly six hours of hands-on training in advanced labs using real operational aircraft and specialty tooling. With all of that real-world training, you'll master the technical know-how to earn your FAA Mechanical Licenses and the confidence to thrive in an exciting field.



Work with experts to become an expert

Penn College's strong corporate

partnerships impact every step of your journey—from your first day in the classrooms and labs, to career placement (oftentimes, well before graduation) and beyond.



A FEW OF OUR CORPORATE PARTNERS INCLUDE:

- Pfizer, B. Braun Medical, West Pharmaceutical Services
- UPMC, Geisinger
- The Hershey Company, Ball Corp.
- Lockheed Martin, GE, Cummins
- Honda, Ford, Fiat, Chrysler, Tesla, Nationwide
- Blaise Alexander Family Dealerships
- PennDOT, DEP, DCNR
- FedEx, UPS
- John Deere, Komatsu, Caterpillar, Volvo Construction Equipment
- Johnson Controls, Siemens, ABB, Inc.
- Miller Electric, Fronius USA, Hypertherm, High Steel Structures
- Levy Restaurants, Wolfgang Puck
- Whiting-Turner, Toll Brothers, Larson Design Group, Allan Myers
- Lycoming Engines, Piedmont Airlines
- Wegmans Food Markets
- National Security Agency
- Corning Inc., Shell Polymers, SEKISUI KYDEX, Benton Foundry
- Pacproinc, Phillips Corp./Haas Automation, Acero Precision
- Kenworth of Pennsylvania, Isuzu Commercial Truck of America, Inc.



How do our corporate partnerships directly benefit Penn College students?



EDUCATION AND EQUIPMENT

From precision healthcare to polymers, our partners are as hands-on as our students, helping Penn College deliver a competitive edge. Through these partnerships, students have access to a robust collection of foundational and state-of-the-art industry equipment.



EMPLOYMENT OPPORTUNITIES

Experience is the best teacher. Our corporate partners hire our graduates for their ability to jump right in and advance quickly.



INNOVATIVE PROGRAMMING

Future-readiness is a joint project between educators and industry partners. Together, we design innovative programs that plug students in.



SCHOLARSHIPS AND AWARDS

Our corporate partners bolster student opportunities through scholarships and sponsorships, and help us attract outstanding professors with faculty awards.



Penn College × Lycoming Engines:

AN INDESTRUCTIBLE PARTNERSHIP

When you're training the next generation, it makes sense to partner with the best in business—like Lycoming Engines. They're a worldwide leader in piston engine production for the general aviation industry. And they're located just one mile from main campus. This mutually beneficial relationship translates into a huge win for Penn College students. From aircraft and equipment donations to generous scholarships and support of the popular SAE Baja off-road race team, partnerships like this set tomorrow makers up for success—wherever their paths may go. If you're recruited to join the team at Lycoming Engines, you won't be alone. This advanced engine manufacturer employs 100+ Penn College alumni from a variety of programs including aviation, automated manufacturing and machining, and welding and metal fabrication.



MAKE



When Penn College welding faculty and students were called on to create the structural framework for an open-air installation to be placed in the Vatican, they answered in a big way.

Visionary Julian Revie had one goal. To create an artistic masterpiece that would unite humanity and nature.

And the result was the Living Chapel, an outdoor sanctuary that integrates renewable energy sources, recycled materials, living plants, and sustainable water resources.

Gilleen Denny, Penn State alumna and chief architectural designer for the project, was charged with bringing Revie's vision to life. She leaned on the expertise of the welding team at Penn College to fabricate the dynamic walls for the Chapel.

Nine instructors and 15 students spent 10 weeks fabricating the structural framework. And it wasn't an easy task. The crew worked a feverish 3,500+ hours and used nearly 5,000 feet of aluminum—about 16 football fields in length—to build the four walls.

But when it was all said and done, the Wildcats involved will tell you it was well worth the experience of a lifetime.



A GLOBAL STATEMENT

Some of the structure is covered in evergreen leaves and flowers while a huge angular section is comprised of recycled metal. Suspended cross cutouts chime in the wind. A solar-powered irrigation system waters the plants. And as the water flows through the system, it makes natural music by causing mallets to hit drums.



EXPLORE
pct.edu/living-chapel



THE WORLD

VIA

WILLIAMSPORT

Focusing on a career can also mean expanding your horizons. Studying abroad brings you firsthand knowledge of how your industry works on a global scale, not to mention it's an amazing way to experience more of the world and the people in it. And with financial support, it's easier than you might think.

On the home front, our student support offices help international students with every aspect of their education. From application to graduation, assistance is always available.



GLOBAL EXPERIENCE COURSES
+ ○ +

- Austria
- Czech Republic
- Dominican Republic
- France
- Guatemala
- Hungary
- Italy
- Japan
- Peru
- United Kingdom

The Future Invested

STUDENTS FIRST

At Penn College, we believe hands-on education should

be within reach for all eligible students. That's why our admissions process is simple. There's no need for national tests or essays. As long as you submit transcripts, you're in. And thanks to rolling admissions, you'll receive your admissions decision sooner.

We'll also pair you with a personal admissions counselor who will guide you through the process and answer any questions along the way.

Our academic programs are designed around our students. In order to provide the best preparation, sometimes that means additional requirements for specific majors or selective admissions processes. Hop on our website to see if this applies to you.

LIGHTENING THE LOAD

Here, you'll benefit from investing in your education right away, and continue to see that investment multiply after graduation. We work with students and their families to facilitate the admissions process and strive to make education possible through financial aid and scholarships.



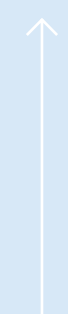
LEARN MORE AND APPLY
pct.edu/admissions

— Estimated \$2.2 million in Penn College Scholarships awarded in 2022-23

DEADLINES

FALL SEMESTER		DEADLINE
FEB 1	Admissions application	priority
MAR 1	FAFSA	priority
	Scholarship application	priority
MAY 1	International application	final
JUL 1	Admissions application	recommended
AUG 1	Transfer application	recommended
SPRING SEMESTER		DEADLINE
OCT 1	Admissions application	priority
	International application	final
	Scholarship application	priority
DEC 1	Admissions application	recommended
JAN 1	Transfer application	recommended

THE PENN COLLEGE EXPERIENCES



- DOING
- LEADING
- LEARNING
- EXPLORING
- TINKERING
- TEACHING
- LIVING
- BUILDING
- CHANGING
- ← INNOVATING

To get more out of the future, we put more into it. We build it each day by facing the challenges, head-on and hands-on, that build our knowledge, skills, and perspective. By taking on today with everything we have and all that we are, we become what tomorrow needs.

96% GRADUATE PLACEMENT RATE

Apply now at pct.edu/apply



PENNSYLVANIA COLLEGE OF TECHNOLOGY

ADMISSIONS OFFICE

Davie Jane Gilmour Center, Room 1068
Pennsylvania College of Technology
One College Avenue
Williamsport, PA 17701-5799 USA

admissions@pct.edu
+1.800.367.9222 or +1.570.327.4761
@penncollege



Pennsylvania College of Technology is an accredited institution and a member of the Middle States Commission on Higher Education (MSCHE). Pennsylvania College of Technology's accreditation status is Accreditation Reaffirmed. The Commission's most recent action on the institution's accreditation status on June 23, 2022, was to reaffirm accreditation.

The Middle States Commission on Higher Education is an institutional accrediting agency recognized by the U.S. Secretary of Education and the Council for Higher Education Accreditation.

Penn College operates on a nondiscriminatory basis.

All data from 2022-23 sources.

pct.edu/apply